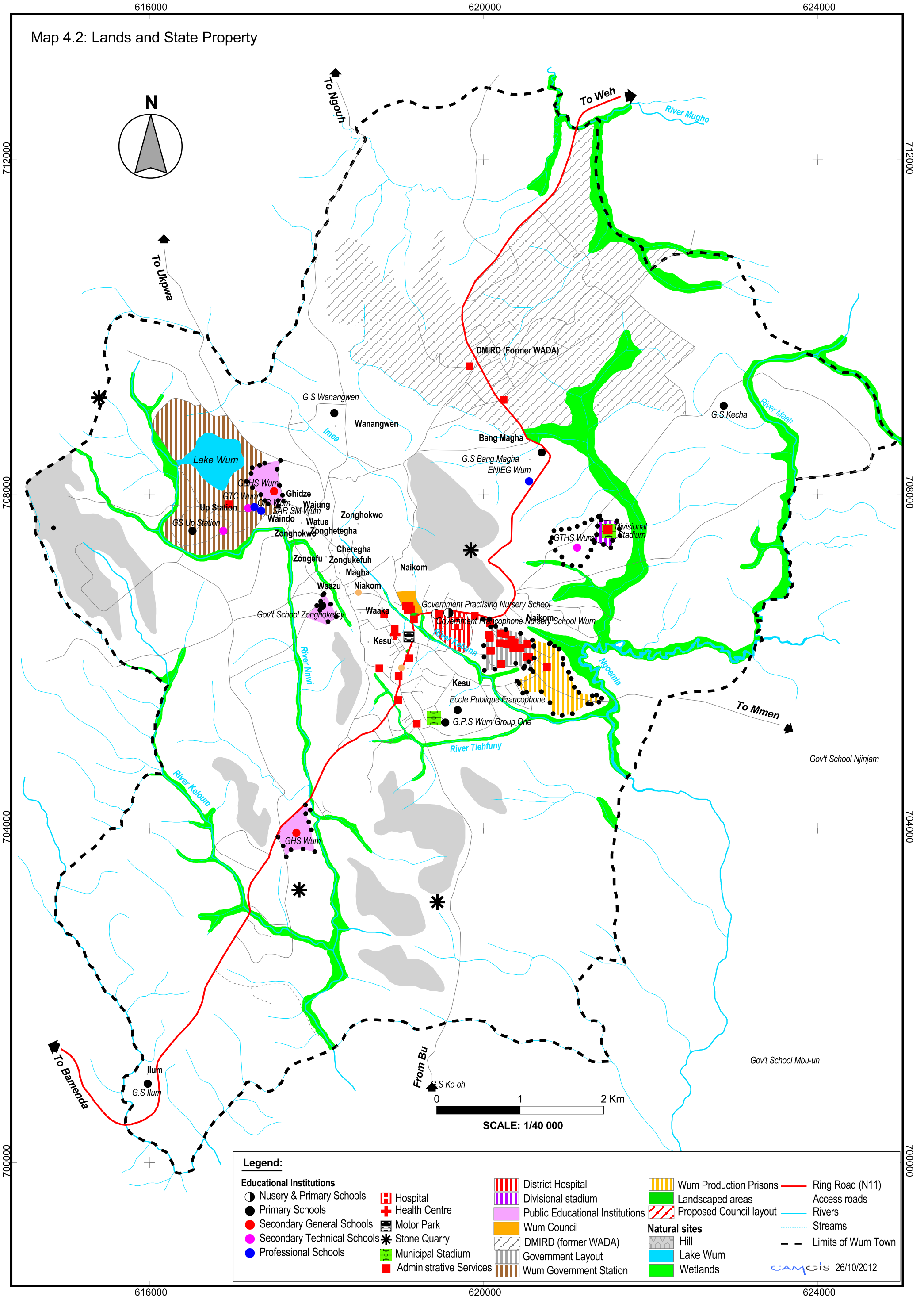


Map 4.2: Lands and State Property



**Legend:**

- |  |  |  |
|--|--|--|
| <p><b>Educational Institutions</b></p> <ul style="list-style-type: none"> <li>○ Nursery &amp; Primary Schools</li> <li>● Primary Schools</li> <li>● Secondary General Schools</li> <li>● Secondary Technical Schools</li> <li>● Professional Schools</li> <li>⊠ Hospital</li> <li>⊕ Health Centre</li> <li>⊠ Motor Park</li> <li>⊠ Stone Quarry</li> <li>⊠ Municipal Stadium</li> <li>⊠ Administrative Services</li> <li>⊠ District Hospital</li> <li>⊠ Divisional stadium</li> <li>⊠ Public Educational Institutions</li> <li>⊠ Wum Council</li> <li>⊠ DMIRD (former WADA)</li> <li>⊠ Government Layout</li> <li>⊠ Wum Government Station</li> <li>⊠ Wum Production Prisons</li> <li>⊠ Landscaped areas</li> <li>⊠ Proposed Council layout</li> </ul> | <p><b>Natural sites</b></p> <ul style="list-style-type: none"> <li>⊠ Hill</li> <li>⊠ Lake Wum</li> <li>⊠ Wetlands</li> </ul> | <ul style="list-style-type: none"> <li>— Ring Road (N11)</li> <li>— Access roads</li> <li>— Rivers</li> <li>— Streams</li> <li>- - Limits of Wum Town</li> </ul> |
|--|--|--|

CAMGIS 26/10/2012