



REPUBLIC OF CAMEROON  
Peace - Work - Fatherland

MINISTRY OF HOUSING  
AND URBAN DEVELOPMENT

BUEA COUNCIL

BUEA LAND USE  
PLAN

### EQUIPMENTS PROPOSALS

## FIG 01 : EQUIPMENTS PROPOSALS FOR 2025

Source :  
Planimetric Datas :  
Quick Bird Images 2012  
Altimetric Datas :  
ASTER GDEM 2010  
Projection System :  
UTM WGS84 Zone 32 N  
Fieldwork :  
LE COMPETING / BEFFA  
Collected on June 2014  
Date :  
October 2014

**Legend**

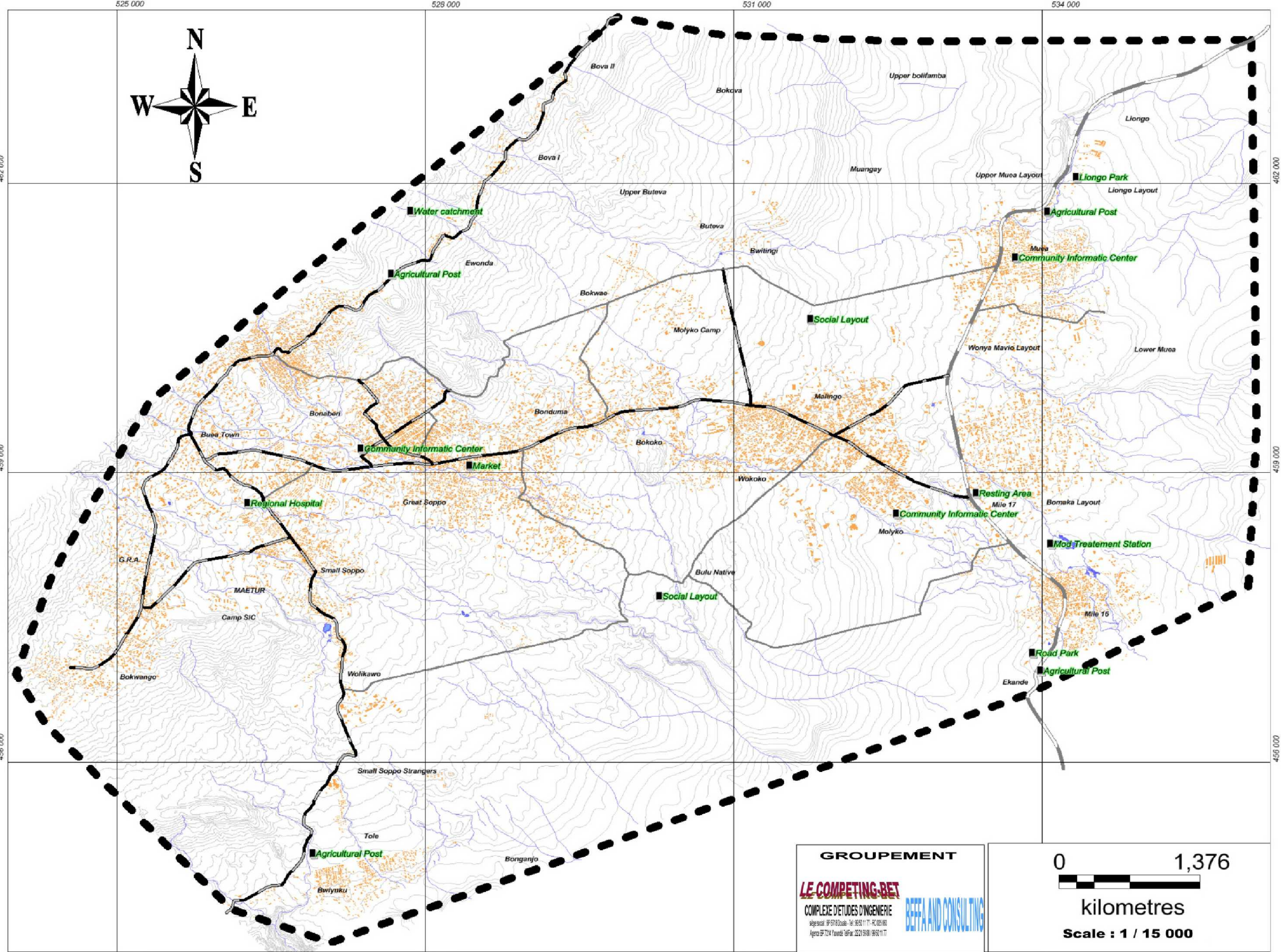
- Roads
- Limits of Buea Urban
- Streams
- Countour Lines (5.00m)
- Lakes
- Constructions

Roads Classification

- National
- Primary
- Secondary

**2024 Development facilities**

- Equipments to be created and/or upgraded in 2025



**GROUPEMENT**

**LE COMPETING-BET**

COMPLEXE D'ETUDES D'INGENIERIE

siège social: BP 6718 Douala - Tél: 9650 11 71 - PC 005 003  
Agence BP 7214 Yaoundé Tél/Fax: 2221 9100 - 9950 11 71

**BEFFA AND CONSULTING**

0 1,376

kilometres

Scale : 1 / 15 000