



REPUBLIC OF CAMEROON
Peace - Work - Fatherland

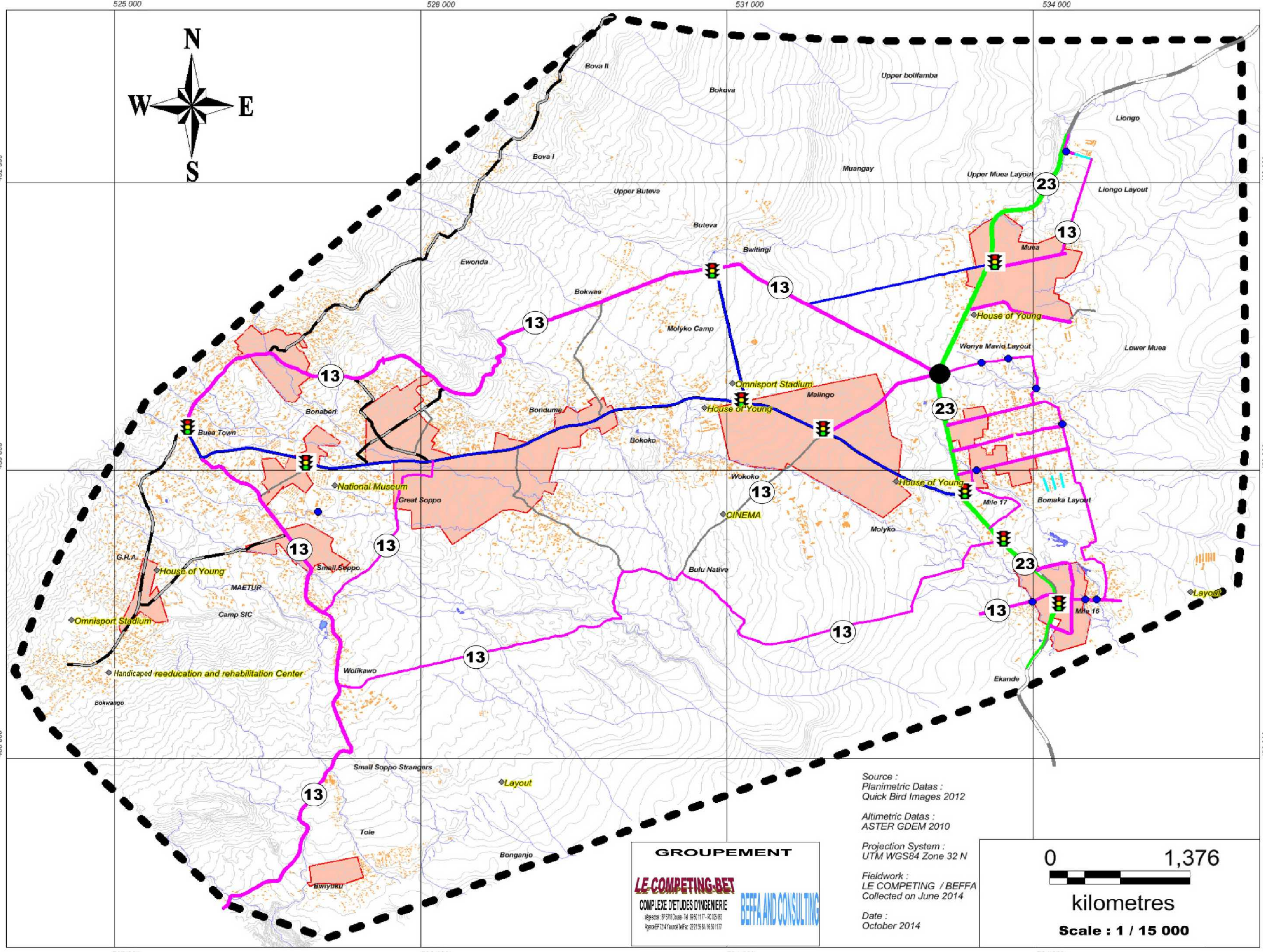
MINISTRY OF HOUSING
AND URBAN DEVELOPMENT

BUEA COUNCIL

BUEA LAND USE
PLAN

EQUIPMENTS PROPOSALS

**FIG 02 :
EQUIPMENTS PROPOSALS
FOR 2029**



- Legend**
- 13 Proposed Footprints
 - 23 Roads
 - Limits of Buea Urban
 - Streams
 - Countour Lines (5.00m)
 - Lakes
 - Constructions
 - Roads Classification**
 - National
 - Primary
 - Secondary
 - Equipments to be created in 2029
 - Traffic Lights to be created and turn about to be restructured
 - Turn About to be created
 - Bridge and culvert to be created and/or upgraded
 - Roads to Modify
 - Roads to enlarge
 - Roads to created
 - Drainage stream to restructured
 - Area to be restructured

GROUPEMENT
LE-COMPETING-BET
COMPLEXE D'ETUDES D'INGENIERIE
siège social: BP 9710 Douala - Tél: 38 52 11 77 - RC 025 983
Agence BP 7214 Yaoundé Tél/Fax: 22 21 95 94 / 95 93 11 77

BEFFA AND CONSULTING

Source :
Planimetric Datas :
Quick Bird Images 2012
Altimetric Datas :
ASTER GDEM 2010
Projection System :
UTM WGS84 Zone 32 N
Fieldwork :
LE COMPETING / BEFFA
Collected on June 2014
Date :
October 2014

