



REPUBLIC OF CAMEROON
Peace - Work - Fatherland

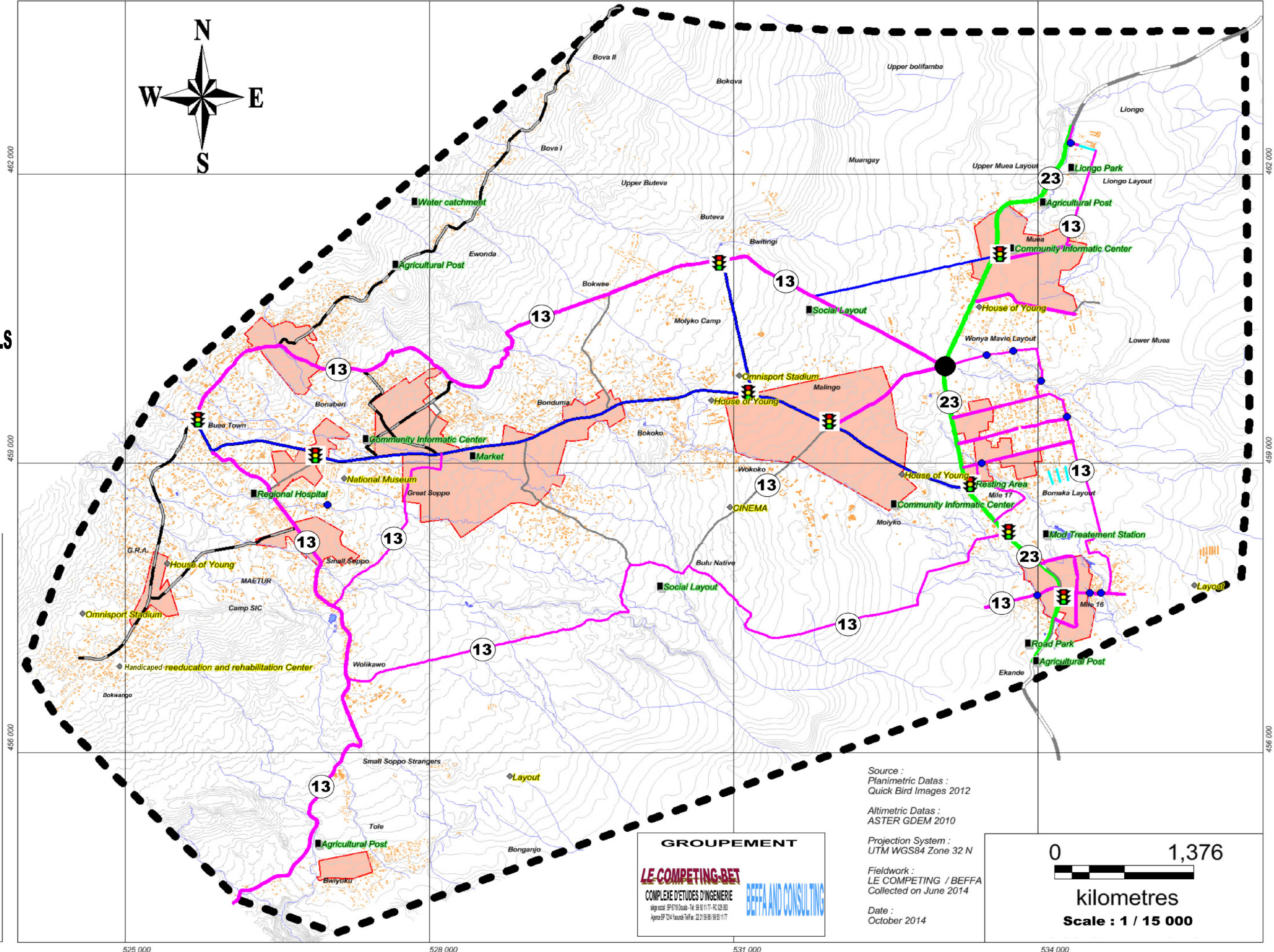
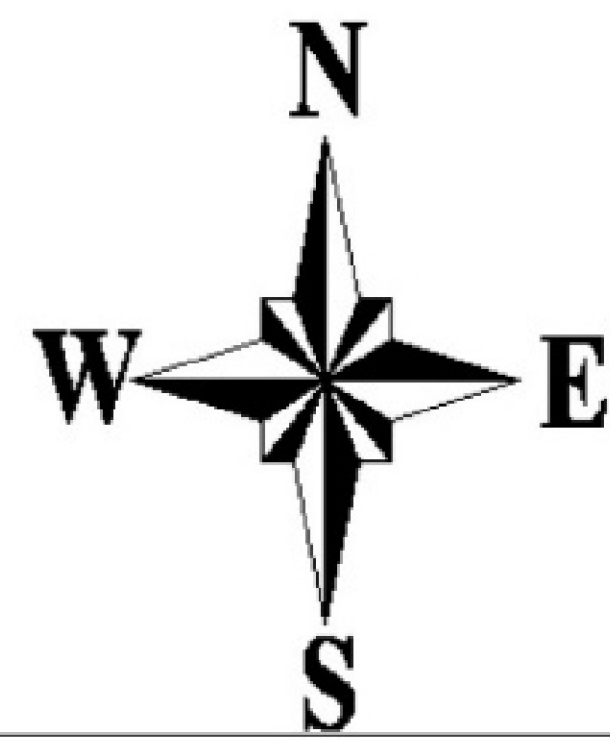
MINISTRY OF HOUSING
AND URBAN DEVELOPMENT

BUEA COUNCIL

BUEA LAND USE
PLAN

EQUIPMENTS PROPOSALS

FIG 03: SYSTHESIS OF EQUIPMENTS PROPOSALS



- Legend**
- 13 Proposed Footprints
 - 23 Proposed Footprints
 - Roads
 - Limits of Buea Urban
 - Streams
 - Countour Lines (5.00m)
 - Lakes
 - Constructions
 - Roads Classification**
 - National
 - Primary
 - Secondary
 - ◆ Equipments to be created in 2029
 - ◆ Equipments to be created in 2025
 - 🚦 Traffic Lights to be created and turn about to be restructured
 - Turn About to be created
 - Bridge and culvert to be created and/or upgraded
 - Roads to Modify
 - Roads to enlarge
 - Roads to created
 - Drainage stream to restructured
 - Area to be restructured
 - ◆ Equipments to be created in 2025

GROUPEMENT

LE COMPETING-BET

COMPLEXE D'ETUDES D'INGENIERIE

siège social: BP 6716 Douala - Tél: 00 30 11 77 - PC 026 063

Agence BP 1214 Yaoundé Tél/Fax: 22 21 50 00 / 09 30 11 77

BEFFA AND CONSULTING

Source :
Planimetric Datas :
Quick Bird Images 2012

Altimetric Datas :
ASTER GDEM 2010

Projection System :
UTM WGS84 Zone 32 N

Fieldwork :
LE COMPETING / BEFFA
Collected on June 2014

Date :
October 2014

