



REPUBLIC OF CAMEROON
PEACE - WORK - FATHERLAND

MINISTRY OF HOUSING AND URBAN DEVELOPMENT

BUEA COUNCIL

BUEA LAND USE PLAN

FIG. 50
ACTUAL SITUATION
SYNTHESIS OF BUEA URBAN

Source :
Planimetric Datas :
Quick Bird Images 2012

Altimetric Datas :
ASTER GDEM 2010

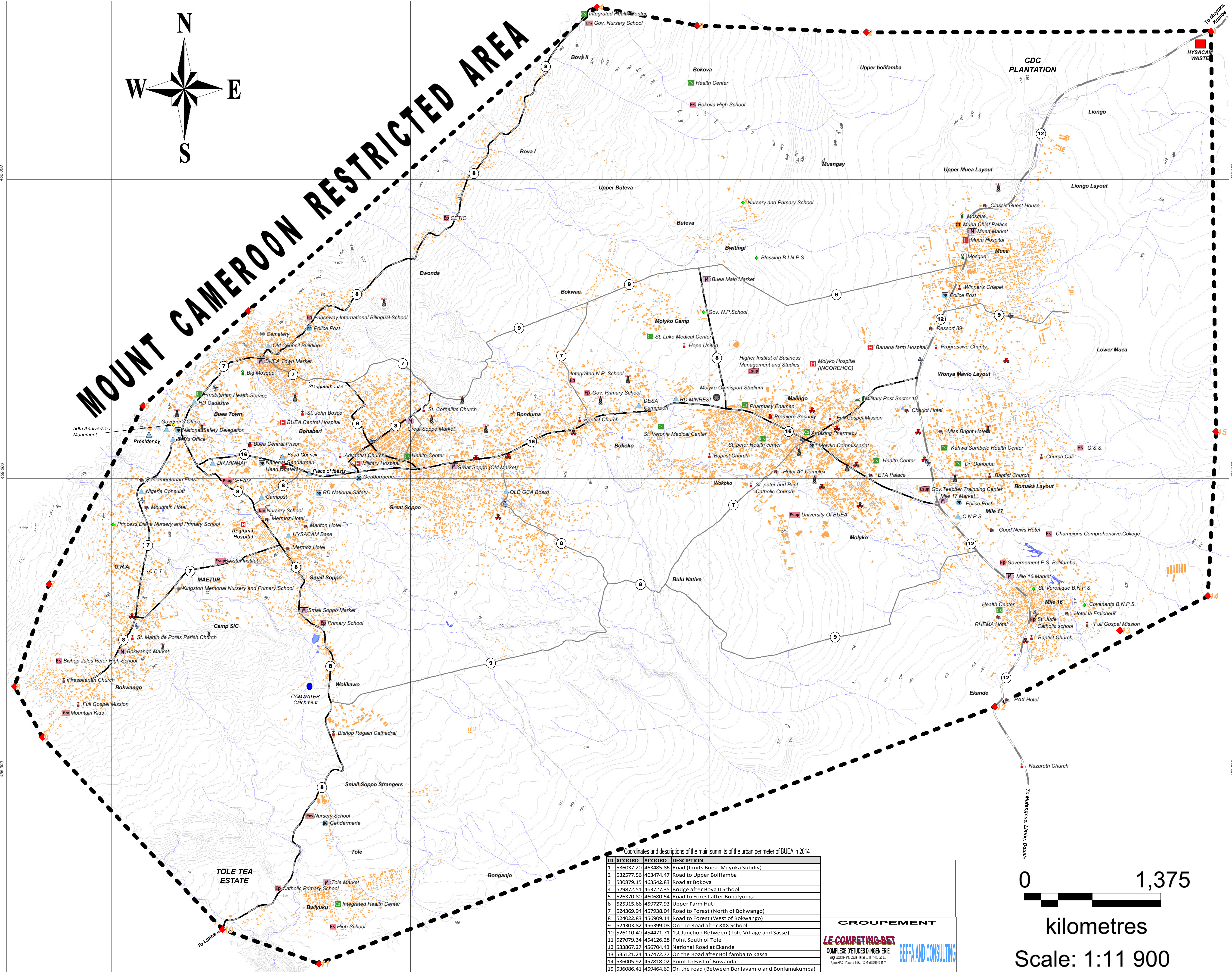
Projection System :
UTM WGS84 Zone 32 N

Fieldwork :
LE COMPETING / BEFFA
Collected on June 2014

Date :
October 2014

Legend

- Roads
- Limits of Buea Urban
- Streams
- Countour Lines (5.00m)
- Lakes
- Constructions
- Roads Classification
 - National
 - Primary
 - Secondary
- Religious Equipments
 - Christian's Cult
 - Muslim's Cult
 - Cemetery
- Health Equipments
 - Hospital
 - Health Center
- Security Equipments
 - Police Post
 - Gendamerie
 - Military Camp
 - Other
- Educational Equipments
 - Nursery
 - Nursery And Primary
 - Primary
 - Secondary Education
 - Higher Education
- Water Supply Equipments
- Touristic Equipments
- States and Parastatal Equipments
- Sport and Leisure Equipments
- Solid Waste Equipments
- Merchand Equipments
- Electric Transforming
- Communication Towers
- Footprints



Coordinates and descriptions of the main summits of the urban perimeter of BUEA in 2014

ID	XCOORD	YCOORD	DESCRIPTION
1	536037.20	463485.86	Road (Limits Buea_Muyuka Subdiv)
2	532577.56	463474.47	Road to Upper Bolifamba
3	530879.15	463542.83	Road at Bokova
4	529872.51	463727.35	Bridge after Bova II School
5	526370.80	462680.54	Road to Forest after Bonalyonga
6	525315.66	459727.93	Upper Farm Hut 1
7	524369.94	457938.04	Road to Forest (North of Bokwango)
8	524022.83	456909.14	Road to Forest (West of Bokwango)
9	524303.82	456399.08	On the Road after XXX School
10	526110.40	454471.71	1st Junction Between (Tole Village and Sasse)
11	527079.34	454126.28	Point South of Tole
12	533867.27	456704.43	National Road at Ekande
13	535121.24	457472.77	On the Road after Bolifamba to Kassa
14	536005.92	457818.02	Point to East of Bowanda
15	536086.41	459464.69	On the road (Between Boniaviamio and Boniamakumba)

GROUPEMENT
LE COMPETING-BET
COMPLEXE D'ETUDES D'INGENIERIE
Rue de la Paix, Yaoundé, Cameroun
Téléphone : 23 91 81 17 / 23 91 17 17

0 1,375
kilometres
Scale: 1:11 900

462 000

459 000

456 000

525 000

528 000

531 000

534 000