

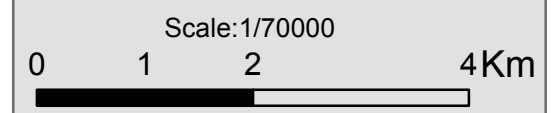


**BAMENDA II COUNCIL
LANDUSE PLAN**

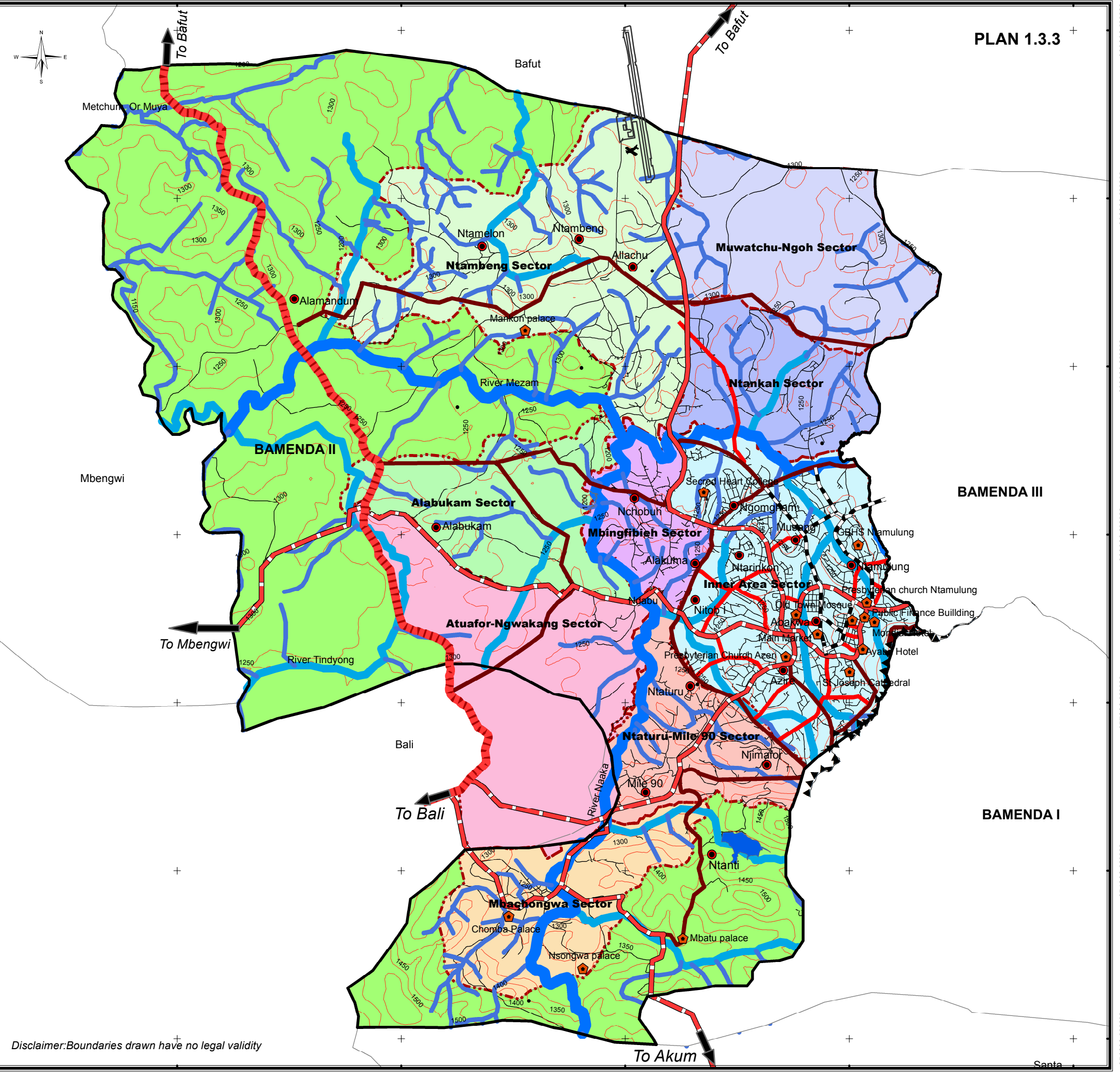
**PROPOSED DRAINAGE
NETWORK**

LEGEND

- | | |
|----------------|-------------------|
| • Spot Heights | — Contours |
| ● Settlements | ▲ Escarpment |
| ⬠ Landmarks | ■ Water Reservoir |
| | ■ Rural Areas |
-
- | | |
|-------------------------|----------------------|
| Drainage Network | Road Network |
| ■ Primary Collectors | ■ Freeway |
| ■ Secondary Collectors | ■ Sub Freeways |
| ■ Tertiary Collectors | ■ Avenue |
| | ■ Primary Roads |
| | ■ Secondary Roads |
| | — Unclassified Roads |
-
- Urban Sectors**
- Alabukam Sector
 - Atuafor-Ngwakang Sector
 - Inner Area Sector
 - Mbachongwa Sector
 - Mbingfibieh Sector
 - Muwatchu-Ngoh Sector
 - Ntambeng Sector
 - Ntankah Sector
 - Ntaturu-Mile 90 Sector
-
- Limits**
- Bamenda II Council Limits
 - Surrounding Council Limits
 - ⬠ Planning area



Compilation : CAMGIS and FN & A.Cameroon
 Projection: Universal Transverse Mercator
 Zone: UTM_32 N
 Datum: D_WGS_1984
 Date : 2014



Disclaimer: Boundaries drawn have no legal validity