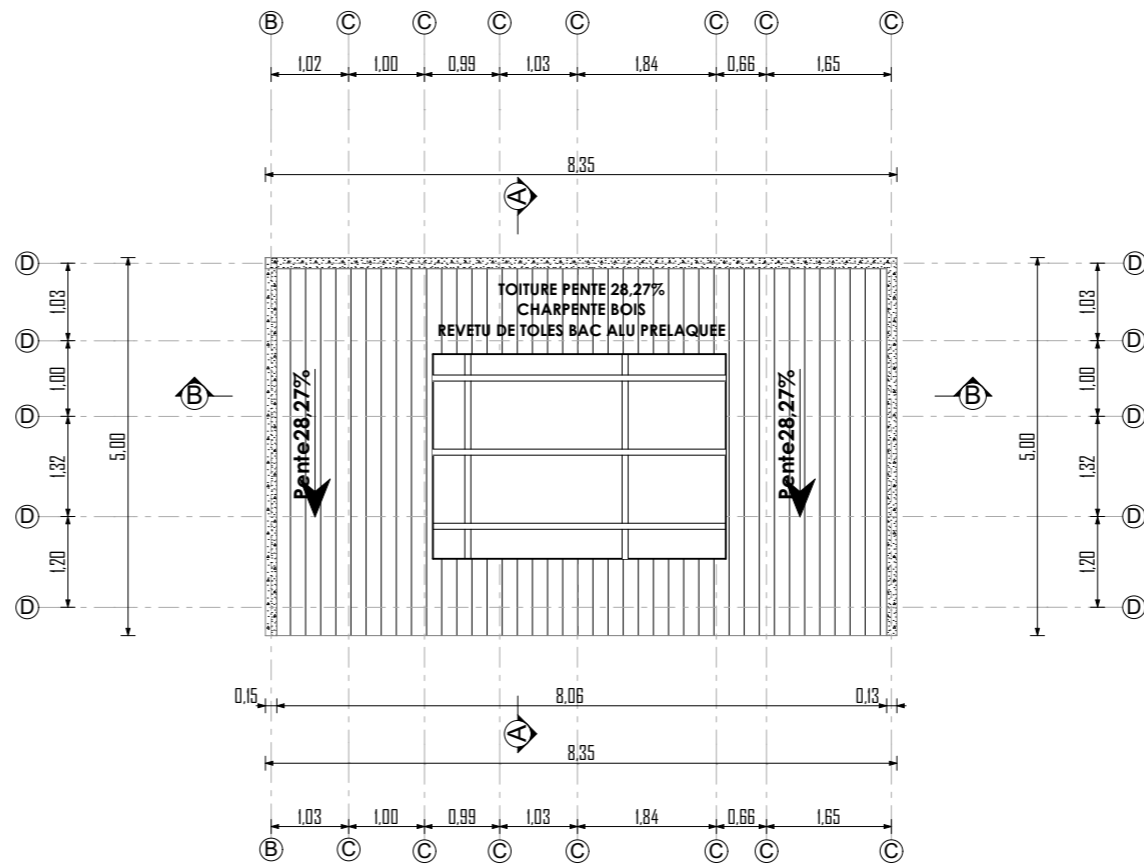
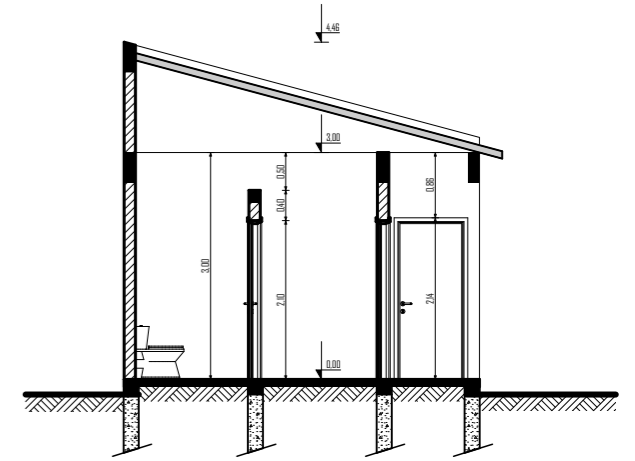


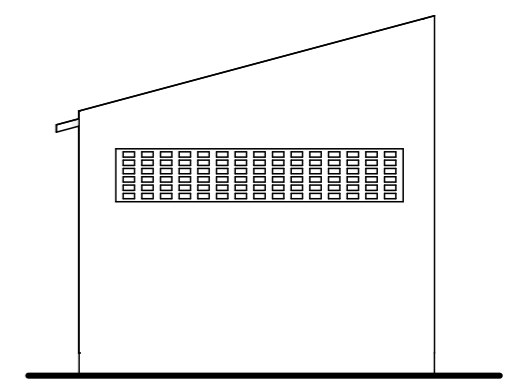
plan de distribution



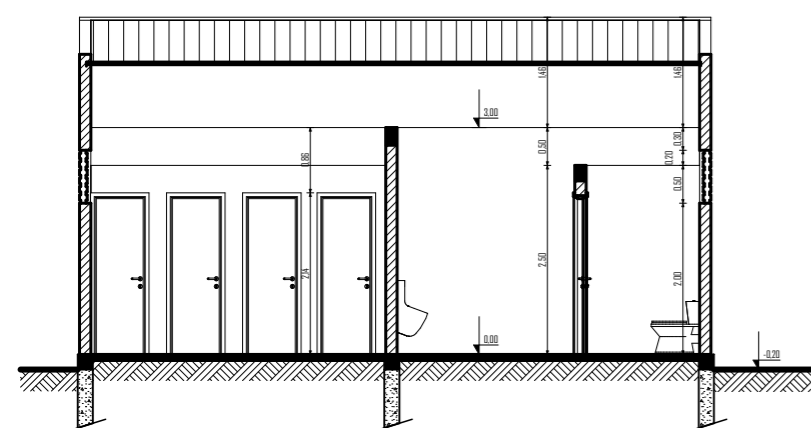
plan de toiture



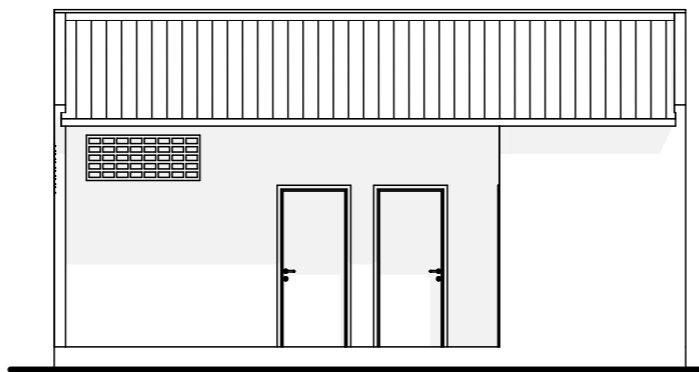
coupe A-A



façade gauche



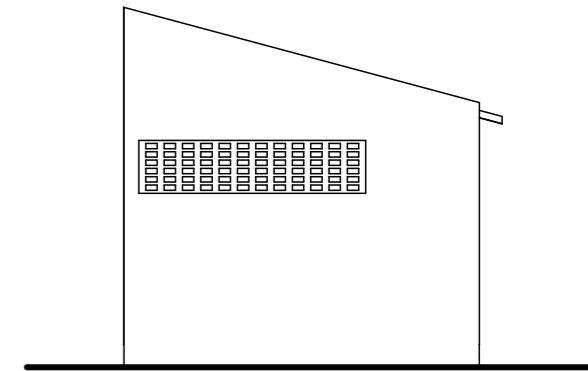
coupe B-B



façade principale



façade arriere



façade droite

REPUBLIQUE DU CAMEROUN VILLE DE BATIBO	ETUDES ARCHITECTURALES, TECHNIQUES ET GEOTECHNIQUE EN VUE LA CONSTRUCTION DU PALAIS DE JUSTICE DE BATIBO		Phase: APS	Indices	Modifications	Dates
	Maitre d'Ouvre: MINISTERE DE LA JUSTICE	Maitre d'Oeuvre: CABINET D'ARCHITECTURE 3A Avril 2019		plan de distribution - plan de toiture- coupes- façades Planche N° TO -01		